

Vision Discount Program

This vision discount program is available free to all New England Dental (NEDA) subscribers and their dependents.

Great Savings— Up to 35% off eyewear

Choose from any available frame including quality name-brand products such as Brooks Brothers®, Ann Klein®, Vogue® and more at provider locations.

With EyeMed Vision Care, New England Dental subscribers and their dependents have access to **over 54,000 vision care providers nationwide at 24,000 locations** including optometrists, ophthalmologists, opticians, and the nation's leading optical retailers:

LENSCRAFTERS®

PEARLE VISION®



It's easy! To request your discount, simply present your New England Dental ID Card or this flyer when you arrive at the provider office or location. Your EyeMed provider will take care of the rest!

To learn more about the EyeMed Vision Care Discount Plan, please visit our Web site at www.nedallc.com.



VISION WELLNESS

Regular eye examinations play a crucial role in ensuring healthy vision and overall health.

- An eye examination can not only detect vision problems, but also can detect the early stages of serious health problems such as diabetes and hypertension.
- One in four children has an undetected vision problem that can interfere with learning, according to the Vision Council of America.
- Undetected eye diseases can lead to worsening eyesight and in some cases irreversible vision loss.

Program Description

SAVE up to 35% OFF Frames, Lenses and Lens Options

Please take a few minutes to review the description of your Vision Discount Plan in detail. Remember, you can use this program as often as you wish—there is no limit to your savings!

Vision Care Services	Member Pays
Exam with Dilation as Necessary:	\$5 off comprehensive exam \$10 off contact lens exam
Complete Pair Glasses Purchase: <ul style="list-style-type: none"> • The following Frame, Lenses, and Lens Options discounts & fees apply only if a complete pair is purchased in same transaction. • Items purchased separately will be discounted 20% off the retail price. 	
Standard Plastic Lenses including Standard Scratch: Single Vision Bifocal Trifocal	\$75 \$95 \$125
Frames (Any frame available at provider location):	30% off retail price
Lens Options: Standard UV Standard Tint Standard Polycarbonate Standard Anti-reflective Coating Standard Progressive (add-on to bifocal)	\$15 \$15 \$40 \$45 \$70
Contact Lenses (Discount applied to materials only): Conventional	15% off retail price
Laser Vision Correction: LASIK or PRK	15% off retail price - or - 5% off promotional price

Frequency

All Services

Unlimited

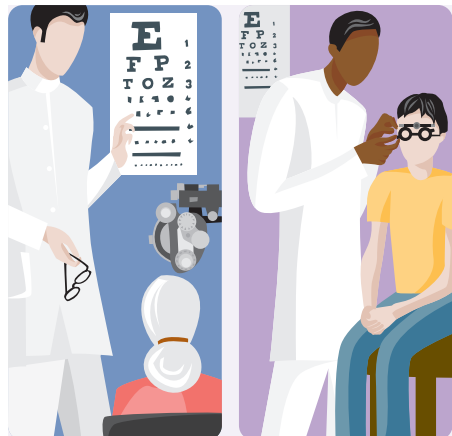
THIS IS NOT INSURANCE

Replacement Contact Lens By Mail Service:

Members may receive replacement contact lenses at competitive prices via the Internet and have them mailed directly to their home. Simply visit www.eyemedcontacts.com to order.

Members will receive a 20% discount on those items purchased at participating providers that are not specifically covered by this Discount design. The 20% discount may not be combined with any other discounts or promotional offers, and the discount does not apply to EyeMed Provider's professional services, or contact lenses. Retail prices may vary by location. Please note, all dependents are eligible for discounts with all discount plans.

**LASIK and PRK correction procedures are provided by the U.S. Laser Network, owned by LCA-Vision. Members must first call 1-877-552-7376 for the nearest laser facility and to receive authorization for the discount.



new england DENTAL
ADMINISTRATORS, LLC®

www.nedallc.com

EyeMed
VISION CARE®